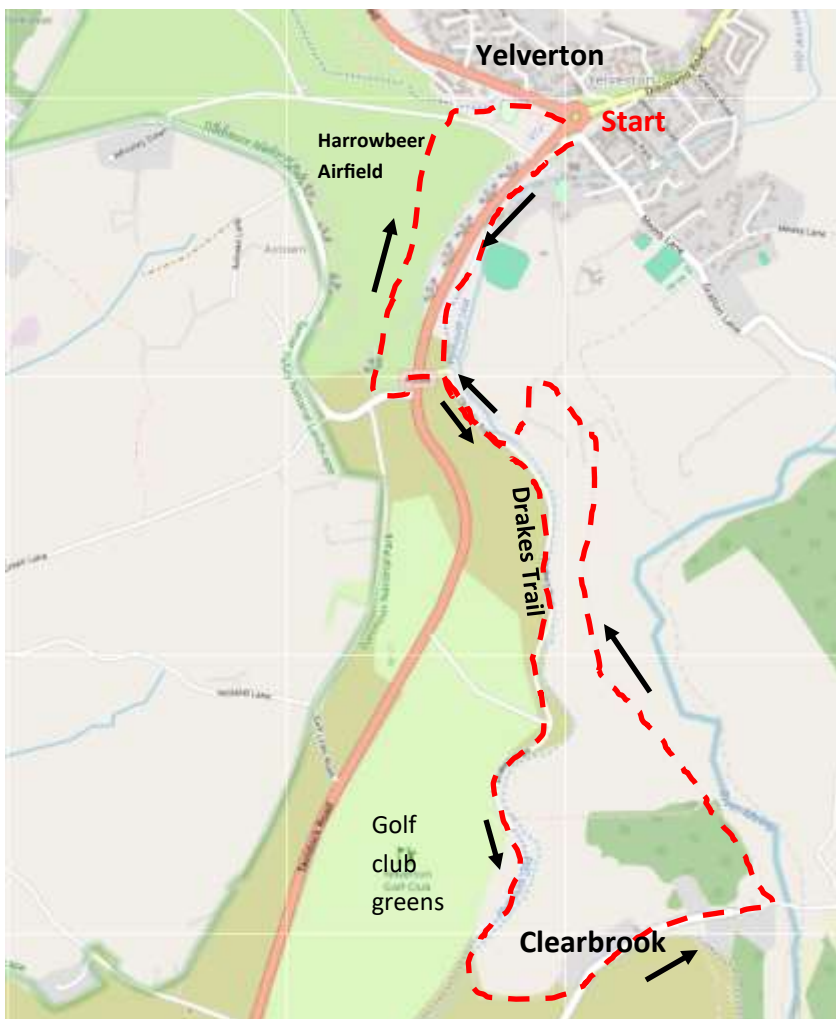


# Yelverton to Clearbrook and back



Perhaps best known for its roundabout Yelverton is situated on the A386 roughly half way between Plymouth and Tavistock. The walk from Yelverton will take you to Clearbrook along Drakes Trail part of Route 27 and returns via Harrowbeer airfield.

If you are driving and not going by bus, park in the car park next to St Pauls Church. If all the spaces are taken then use the old airfield on the other side of the A386.



**With the shops behind you head for the corner of the church car park and follow Drakes Trail towards Plymouth for about 1.5 miles going over a bridge and through 3 gates before you come off it.**



**You will soon find your-self in between the A386 on your right and Plymouth leat on your left which was built by Sir Francis Drake in 1590. Stay on the tarmac track being aware that it is shared with bikes usually without a bell to warn you they are fast approaching behind you.**

As you walk along the road you will notice that there is also a disused leat on your right. This is Devonport leat and was built in about 1790 to take water to the town of Devonport which was then known as Plymouth Dock.



**Go over a bridge that spans Devonport leat**



**Turn left go over another bridge and keep following  
Cycle route 27 which you now also share with cars.**



**After about 100m keep straight on but remember this sign as we will come back up the path on your left on our way back**



**On reaching this junction keep following the route 27 signs**



**As you walk along you will see in the surface of the path granite stones. These are the sleepers used in the Plymouth and Dartmoor Railway the route of which you are following.**



**Go through the 3rd and final gate but before you carry on you will see an information board on your right behind the wall that tells you all about the tramway.**



**Now follow  
the sign  
post to  
Clearbrook**

**by coming off  
the cycle track  
and walking left  
down to the  
leat.**

**It can some-  
times be quite  
muddy**



**Go over the leat  
and down the track**



**Walk down the hill all the way through the village passing the houses on your left.**



**And on past or pausing at the Skylark Inn**

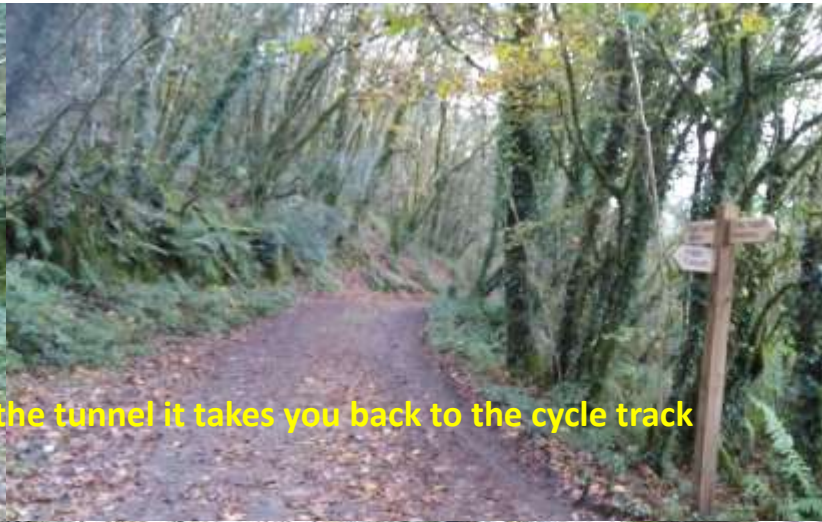


**Under the bridge**

**When you reach the bottom of the hill turn left to walk along a track.....**



**.....with the river Meavy on your right.**



Ignore the footpath sign pointing up through the tunnel it takes you back to the cycle track

On your right in the woods just before you reach the houses you will see the remains of South Yeoland mine



Go past the house on your left



**When you reach the house at the end of the track fork left to go through a little gate.**



**Being careful not to snag your clothing on the barbed wire fence follow it through this kissing gate all the way to the next private road.**



**Go through the kissing gate and turn left**



**Go under the old railway bridge and follow the private road as it bends right on the other side.**



**Turn left at the T junction. You may notice that we are following signs for the Dartmoor Way which you will see pinned to finger posts and gates. This is a 108 mile route which takes the walker all around the circumference of the National Park.**



**As the private road bends left keep straight on and through a gate**



**Go past the house and over the leat and up the track .**

**Very soon you will arrive back at that finger post you will remember we walked past an hour or so ago.**



**When you get there turn right.**



**Go over the bridge that crosses Devonport Leat. You now have the option of turning right to go directly back to Yelverton or straight on to go back via Harrowbeer Airfield .**



**For the airfield route keep straight on up to the A386 and cross over using the traffic island**

**On the other side of the A386 turn left and using the wide verge walk back to the road junction and go through the gate by the cattle grid.**





**Turn right and walk past Roborough Rock**

Passing on your way the remains of an Allan Williams WW2 gun turret



Pause to read the Harrowbeer airfield information board next to the blast bay nearest to Roborough Rock



**Then walk on down the airfield road towards Yelverton and when this white building comes into view on the other side of the airfield head straight towards it to meet a road.**





**Cross over the road, go through a gate by the cattle grid, and walk down this footpath passing another information board on your right**



**Follow the cycle route 27 signs to go behind the recycling bins**



**Passing the play park on your right follow the pavement up to the roundabout**



**Cross the road and make your way back to your car.**



I hope  
you enjoyed the walk

Here is some information for you

Highlight the web site in blue by tapping it then tap it again to go there

**St Pauls Church Yelverton** [https://www.heritagegateway.org.uk/Gateway/Results\\_Single.aspx?uid=MDV2354&resourceID=104](https://www.heritagegateway.org.uk/Gateway/Results_Single.aspx?uid=MDV2354&resourceID=104)

**Plymouth leat** [http://www.heritagegateway.org.uk/Gateway/Results\\_Single.aspx?uid=MDV19108&resourceID=104](http://www.heritagegateway.org.uk/Gateway/Results_Single.aspx?uid=MDV19108&resourceID=104)

**Devonport leat** [https://www.heritagegateway.org.uk/Gateway/Results\\_Single.aspx?uid=MDV19902&resourceID=104](https://www.heritagegateway.org.uk/Gateway/Results_Single.aspx?uid=MDV19902&resourceID=104)

**Allan Williams turret Anti aircraft gun**

[https://en.wikipedia.org/wiki/British\\_hardened\\_field\\_defences\\_of\\_World\\_War\\_II#Allan\\_Williams\\_Turret](https://en.wikipedia.org/wiki/British_hardened_field_defences_of_World_War_II#Allan_Williams_Turret)

**Raf Harrowbeer** <http://www.rafharrowbeer.co.uk/>

**Thomas Tyrwhitt's horse-drawn tramway**

[https://www.heritagegateway.org.uk/gateway/Results\\_Single.aspx?uid=MDV2221&resourceID=104](https://www.heritagegateway.org.uk/gateway/Results_Single.aspx?uid=MDV2221&resourceID=104)

---

Words and pictures by David Simkins

**Updated November 2025**