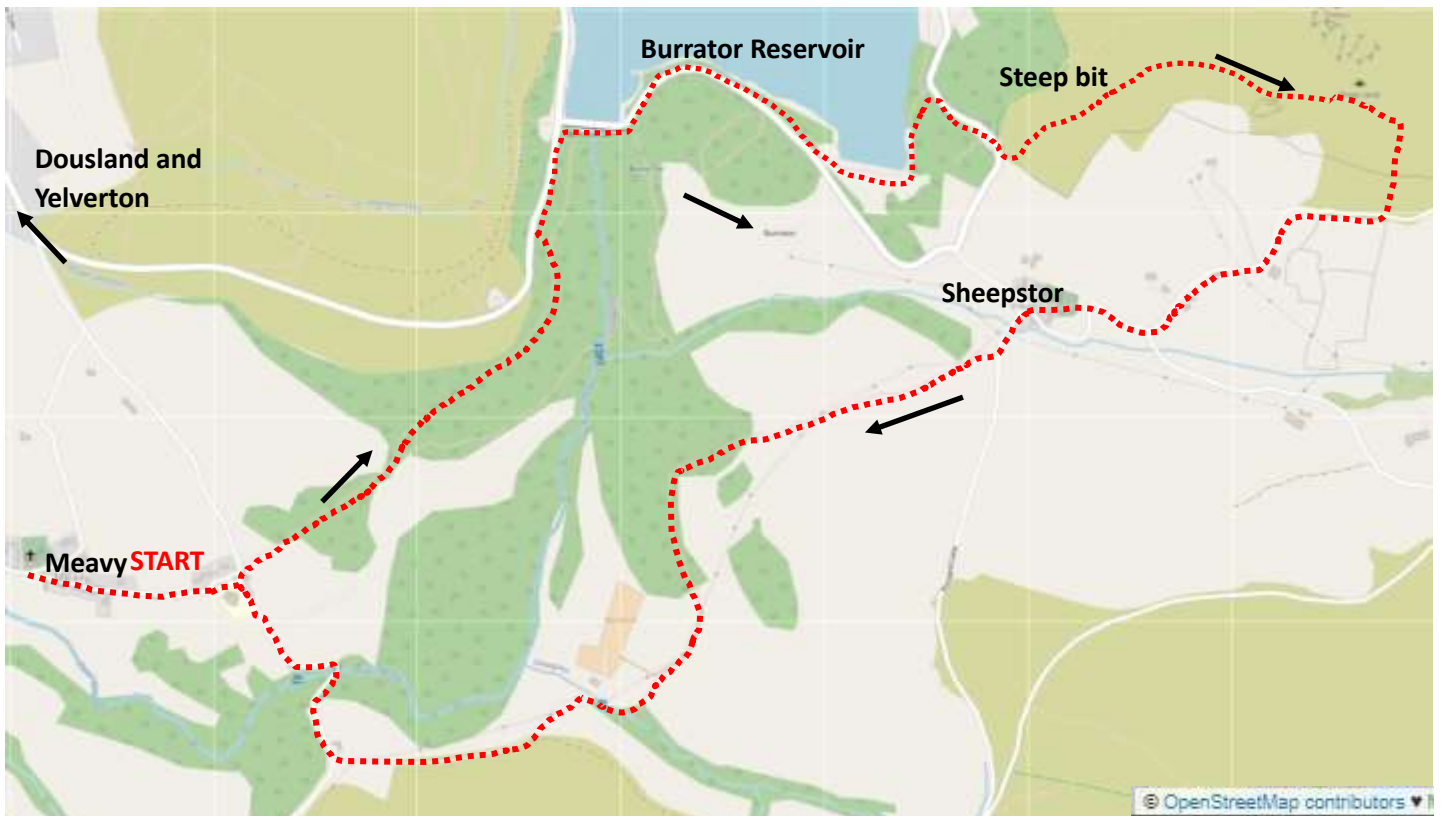


The Pixies House Walk



This walk is just under 5 miles and starts in the Village of Meavy SX540673 PL20 6PJ. Finding the house is actually quite hard but it is a lovely walk especially in May when you walk through a bluebell wood. There are a few stiles for dog walkers to be aware of and one steep up.

With Meavy Green on your left walk along the road past the school and go through the gate into the field which is behind the white house in front of you .



Follow the well used path across the field

Having gone through the triple set of gates....



...keep left to go up hill through the wood

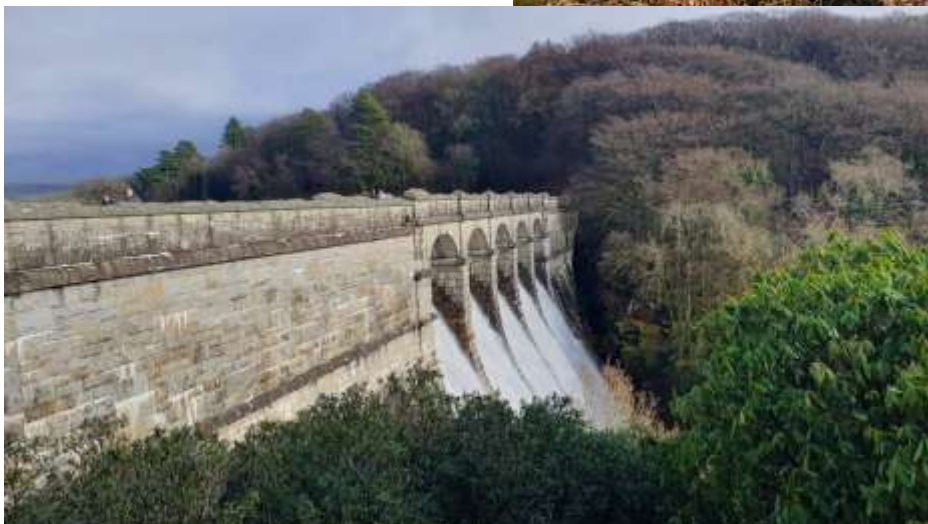


At the top of the hill you reach Drakes Leat also called Plymouth Leat and these words are inscribed on a wall next to the leat which you now follow heading towards Burrator dam.



When the leat disappears under a track fork left ..

..and walk up to the road emerging by the toilets.



Turn right along the road and walk up to the reservoir dam.



Read all about it



Take a photo



Having crossed over stay on the road for another 50m or so and then go through the gate on your left.



The lake side path will take you all the way to Sheepstor dam the smaller of the two dams which in 1898 only cost £24000 to build.

Follow the wide track over the dam and all the way out to the road. On reaching the road turn right.



In about 100m you will reach a small parking area. Here turn left and walk up an ancient walled track.

Go through the gate and onto the open moor and walk up hill (this is the steep bit)



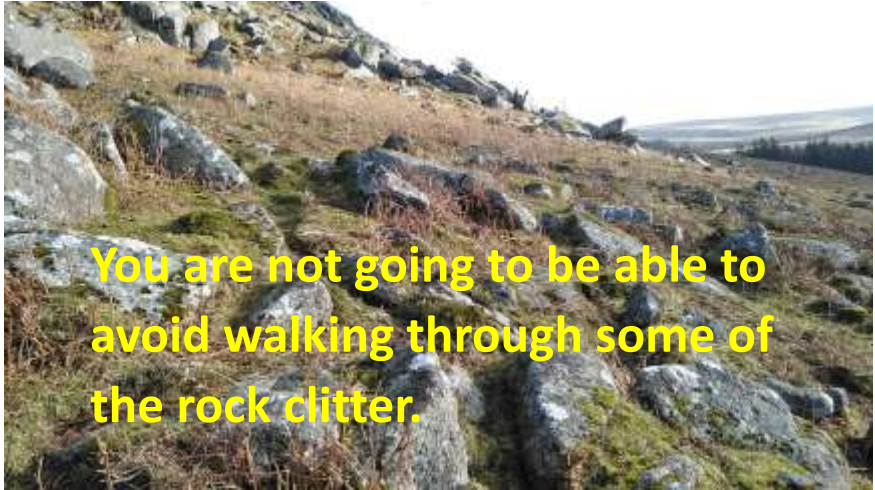


50m past the big rock it starts to level out slightly. Look right and spot a PCWW boundary marker and head towards it.

Passing the post on your right walk on up to the base of the rock clutter and then...



....using the sheep tracks veer right along the base of the clutter trying to keep to the same contour.



You are not going to be able to avoid walking through some of the rock clutter.

Looking right to the horizon you will see a clump of trees, keep going until it lines up with the barn in the field below. Look left and you will see an oak tree and a holly tree. The Pixies House is between the two and a bit higher up.



Clump of trees

Barn

This photograph is taken from the Pixie cave



Holly Tree

Pixies House

Oak tree

!!Please think twice about visiting, it really isn't very easy and unless you are thin you can't get inside!!





To return to Meavy with Sheeps tor and the Pixie house behind you set off downhill...

..using the sheep tracks and cross over the dried up leat.



When you reach the road turn right...

..and at the bottom of the hill turn right again and walk along the road to the church.





As the road bends left walk up the steps and into the church yard



A delightful church made famous by the Brookes family who were the White Rajahs of Sarawak on the island of Borneo from 1841 to 1946. The pink granite tomb is on your right and historical information is held in the church.



Exit the church yard via the lychgate then turn left and head off along the narrow lane in front of you.



Follow the road over Sheepstor brook and then turn right into Brook Farm.



...and head towards the pine tree in the corner of the field.



Go through the left hand side pedestrian gate.



Then follow the fenced in path to a challenging stile over a stone wall





The path takes you over another stile and into the bluebell wood



Follow the yellow dots

through the bluebell wood



Exit the wood by going over a ladder stile which is also a bit challenging and turn right.



The narrow path becomes a wide farm track then fork left over a stile.



The path takes you around the farm instead of through it, and into a wood...



...and over a bridge .



Turn left in front of Yeo Farm



Turn right at Marchants Cross and walk on down to the river Meavy.



Cross the bridge and follow the road past the school and back to your car.



You could try the stepping stones when the water level is lower but the bridge is safer.